

## Functions and Features

Light Source	5LED
Chromoendoscopy	CBI Regular/CBI Indigo/CBI Aqua /CBI Amber
Image Enhancement	Structure/Edge/Color
Brightness Adjustment	Automatic /Manual mode
Digital zooming function	1/1.2/1.5/1.8/2 times
Freeze and playback	It can freeze a real-time image and play back the frozen image
IRIS	Peak/Average/Auto
USB Storage	High definition images and videos can be stored at any time, convenient to carry
Dual Image Display	Two images

## UHD-GT/CL

	Model	Working length	Diameter of distal end	Diameter of insertion tube	Diameter of instrument channel	Depth	View of field	Range of bending
<b>Video Gastroscopes</b>	*UHD-GT300	1050mm	9.2mm	9.2mm	2.8mm	2-100mm	145°	U210°D90°L100°R100°
	*UHD-GT300T	1050mm	9.8mm	9.6mm	3.2mm	2-100mm	145°	U210°D120°L100°R100°
	*UHD-CL300I	1300mm	12.2mm	12.0mm	3.7mm	2-100mm	170°	U180°D180°L160°R160°
<b>Video Colonoscopes</b>	*UHD-CL300L	1650mm	12.2mm	12.0mm	3.7mm	2-100mm	170°	U180°D180°L160°R160°
	*UHD-CL300TI	1300mm	12.2mm	12.0mm	4.2mm	2-100mm	170°	U180°D180°L160°R160°
	*UHD-CL300TL	1650mm	12.2mm	12.0mm	4.2mm	2-100mm	170°	U180°D180°L160°R160°

(\*: Forwarding water-jet)

# AOHUA



Shanghai Aohua Photoelectricity Endoscope CO.,LTD.

# AOHUA

### China

No.66, Lane133, Guangzhong Road,Minhang District, Shanghai, P.R.China.(Postcode: 201108)

Tel: 86-21-52210929

Email: [marketing@aohua.com](mailto:marketing@aohua.com)

website: [www.aohua.com/en](http://www.aohua.com/en)

### Germany

Fichtenstrasse 27, Brunnthal, Munich

Tel: +49(0)81 04/8908-10

See the Manual for details of contraindications or precautions.

v3.0\_2304

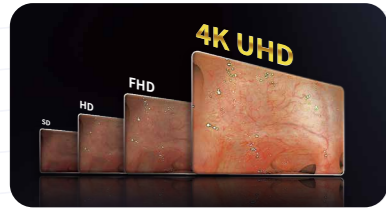
# AQ-300

## Video Endoscopy System

## Advancing innovatively to advanced endoscopy

AQ-300, upgraded in terms of imaging, staining, maneuverability, and intelligence, is an advanced and high-end platform for endoscopic diagnosis and disease management.

## Brand new experience



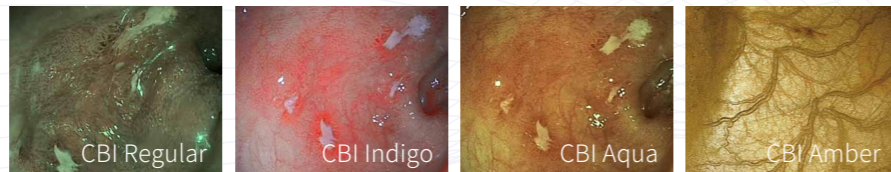
### 4K ultra high definition

With a resolution of up to 3840x2160 pixels on 4K display, the endoscopic pixel performance is significantly improved.



### 4 CBI modes on 5LED

Four chromoendoscopy modes can be achieved through different combinations of the five LED light sources, providing efficient, fast, and accurate solutions for clinical problems in different scenarios.



### Intelligent

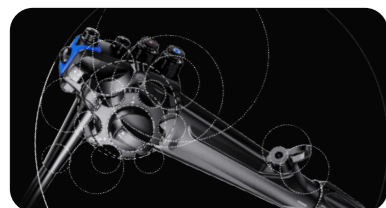
Experience advanced intelligent operation flow. Face recognition, voice control, and custom settings are available.

## High-end configuration



### Colo Smart Assistance (CSA)

Adjustable Stiffness/Sync Force Transmission/Elastic Bending



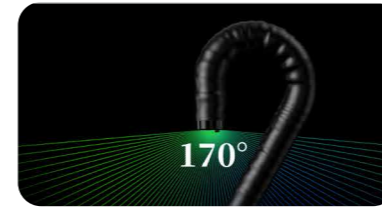
### 5th generation handle

Newly lunched handle design, which is lighter and more maneuverable, it reduces hand fatigue.



### 3 light guides

The endoscopic lens is designed with 3 light guides, providing brighter and more uniform illumination in lumen especially for far field.



### 170° wide field of view

It offers a wider field of view, which included in the entire colonoscopy series.



### Large instrument channel

3.2mm large instrument channel gastroscope and 4.2mm large instrument channel colonoscope are available.



### Standard forwarding water-jet

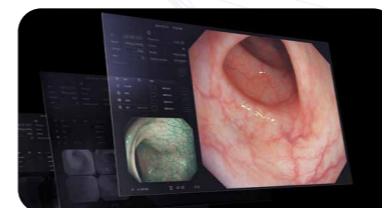
The forwarding water-jet function is included in the entire series of gastrointestinal endoscopes, helping to maintain a clear view during diagnosis and treatment.

## Classic Renewal



### Laser transmission and wireless power supply

With laser transmission, high-speed transmission and improved insulation strength and anti-interference of high-frequency signals can be achieved, resulting in more stable transmission of images. Wireless power supply technology eliminates the risk of patients being exposed to electric leakage.



### Dual image display

Display both white light and optical chromoendoscopy images on the same screen to show the differences between the two, and utilize CBI technology.

## Compatible with advanced scopes

ERCP / Optical zoom / Dual-focus

And more...

